

GRAPPLES

SUI

SMG GRAPPLE

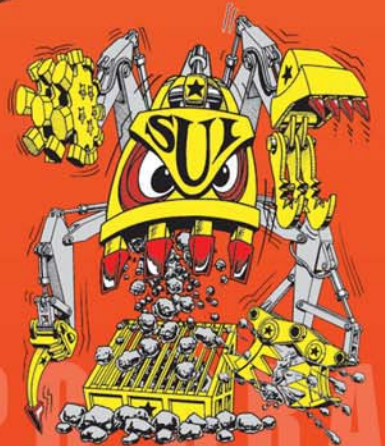


SUI MANUFACTURING, INC.

452 W. VALLEY BOULEVARD

RIALTO, CA. 92376

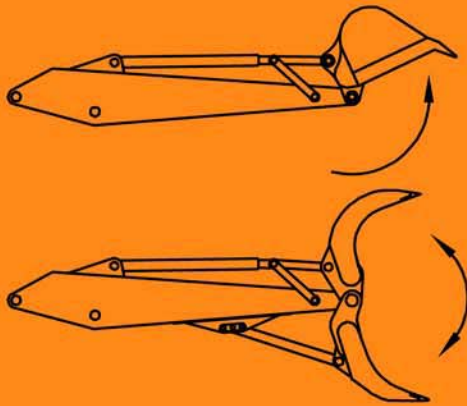
(800) 544-6453



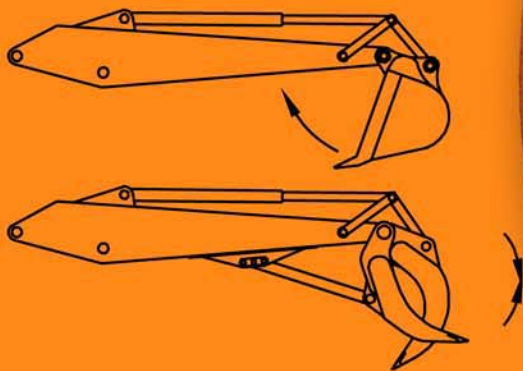
GPG Grapple Operation.

The GPG Grapple replaces the bucket of an excavator, operates with the same controls and no additional hydraulics are required. The bucket dump control operates the GPG open function and the bucket curl function operates the GPG close.

Please see the illustration below.



Bucket Dump = GPG Open



Bucket Curl = GPG Close

Box-Tine Construction.

The use of the SUI box-tine design and the use of high tensile, high alloy, abrasion resistant steel creates a minimal weight, yet maximum strength tool. SUI grapples can withstand the full digging force of the excavator on each tine.



**Heavy Duty
Box-Tyne Construction**

**Heavy Duty
Wear pads**

SMG

GPG, GRP AND SMG GRAPPLE

SUI Manufacturing, Inc.

was established over 13 years ago.

SUI Manufacturing, Inc. is one the

leading manufacturers of

Construction Attachments and

distributors of construction components/accessories in the

United States. Always keeping the operator in

mind, we have engineered our products for

rigorous applications and designed them

for ease ,durability and longevity that is

GPG Model

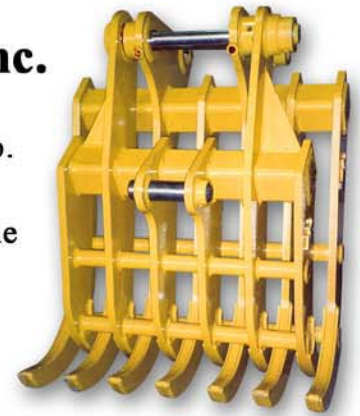
sought throughout the industry. Totaling over 300 years of

combined experience, SUI has excelled in Design,

Fabrication, Manufacturing, Sales and Professional

Customer Service.

Our Customers have come to expect nothing less!



GPG Model



GPG Model



uction

Model

MMG Model



SPECIFICATIONS

MODEL GPG SMG MMG	Approx. Excavator Weight		Unit Weight (lbs.) (kg)		Full Open (In) (mm)		Complete Close (In) (mm)		Height Closed (In) (mm)		Width Upper Moveable Jaw (in) (mm) Variable		Width Lower Fixed Jaw (in) (mm) Variable	
	lbs.	Ton												
SUI-10GPG SUI-10SMG SUI-10MMG	Loader, Backhoe & Mini-excavator 12000 6		867	394	58	1473	6	152	34	868	20	508	30	762
SUI-20GPG SUI-20SMG SUI-20MMG	20000	9	1180	536	74	1880	8	203	50	1270	22	560	33	838
SUI-30/40GPG SUI-30/40SMG SUI-30/40MMG	40000	18	2805	1273	95	2413	9	230	58	1485	30	762	44	1118
SUI-50/60GPG SUI-50/60SMG SUI-50/60MMG	60000	28	4355	1977	114	2896	11	279	69	1753	32	813	47	1194
SUI-70/100GPG SUI-70/100SMG SUI-70/100MMG	80000	37	5405	2454	130	3302	12.2	310	78	1981	37	940	52	1321
SUI-110/150GPG SUI-110/150SMG SUI-110/150MMG	160000	75	7956	3612	150	3810	14	356	87	2210	50	1270	70	1778

Note: Specifications are approximate and subject to change without notice

SUI Grapples come in 3 basic mounting configurations:

The GPG Standard Mount is designed with multi-machine mounts, capable of fitting several model excavators within the same weight class by simply changing out the mounting kit (pins, bushings and spacers). Not to be used on a coupler system.

The SMG Quick Coupler Mounts are designed to be captured by The SUI Coupler or other manufacturer's quick coupler.

The MMG Custom Mounts are designed to be used with a quick coupler system. The Major benefit is that it has an interchangeable adapter plate system, so you can easily adapt to any machine with in the same weight class.

SUI Heavy Duty Grapples are designed for versatility and longevity. With a standard two tine upper jaw and a three tine lower jaw, this grapple has proven itself over the years as a preferred method for demolition, scrap handling, rock handling, land clearing and many more applications.

No Additional Hydraulics required. Our Grapples pin on in place of the excavator bucket, eliminating the need for additional hydraulics. A mounting pad is welded to the bottom of the excavator arm which then attaches to the position arm and the grapple's lower jaw. The grapple's upper jaw articulates using the excavator's bucket cylinder and linkage.

SUI Grapples pivot group is designed to withstand the harshest working conditions. The main pivot has a hardened pin and heat treated bronze bearings.

SUI Grapples utilize a spool assembly to reduce bearing friction and distribute workloads to the grapple structure. This combination reduces pin stress and excessive wear, ensuring a long service life.



MMG Model